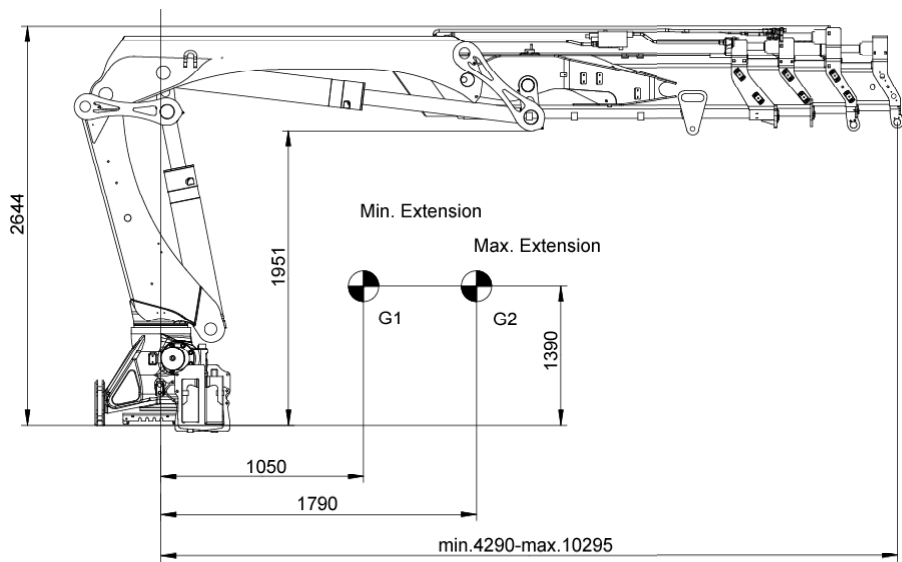


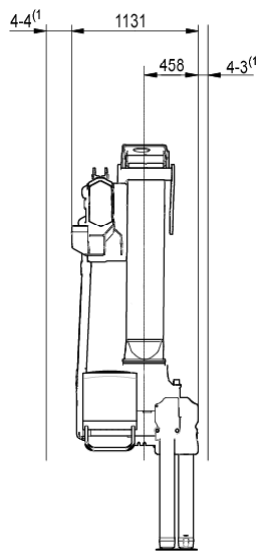


HIAB XS 288 EP-3 CL

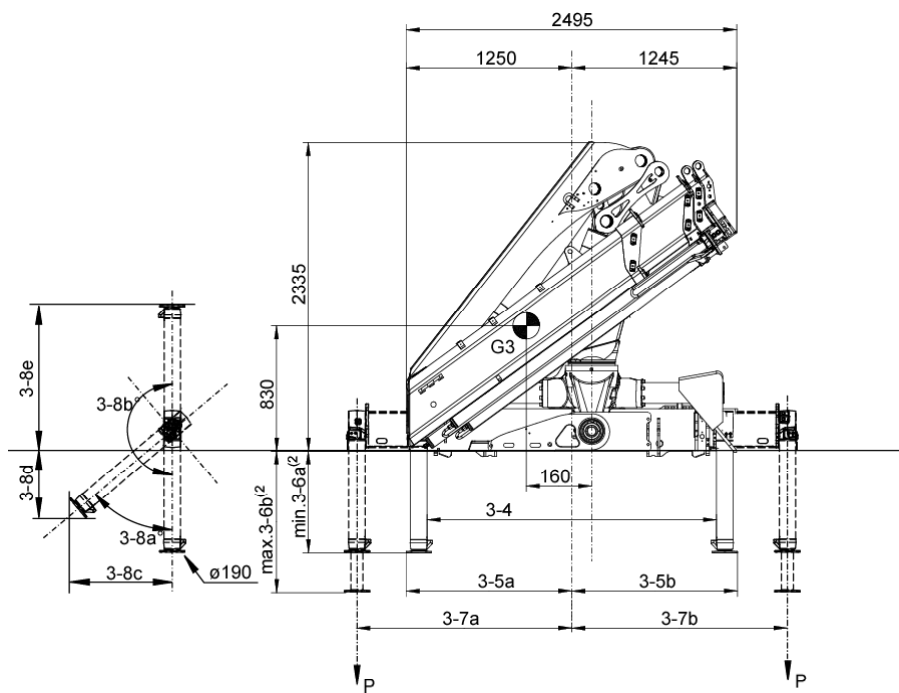
Side View Unfolded Stretched



Side View Folded

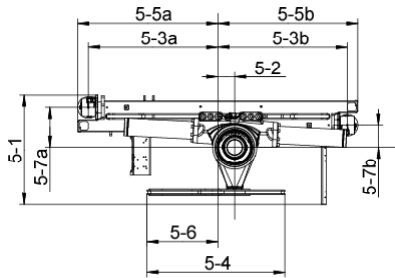


Front View Folded



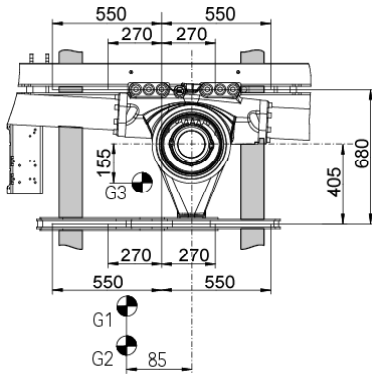
NOTE For specific values, see Table of Measurements

Top View Crane Base



NOTE For specific values, see Table of Measurements

Chassis Installation



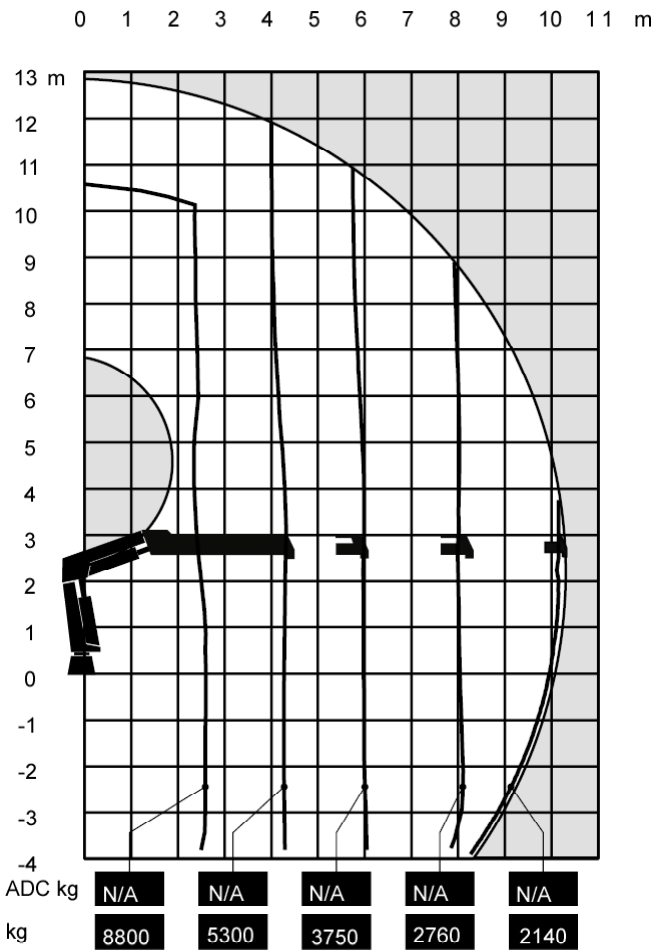
(1) Variable value depending on option.
(2) Variations may occur depending on mounting position.



HIAB XS 288 EP-3 CL



Load Diagram



Capacity and performance

Lifting capacity	223.8 (kNm)
Standard lifting capacity at standard outreach	2.5 (m) - 8800 (kg)
	4.3 (m) - 5300 (kg)
	6.0 (m) - 3750 (kg)
	8.0 (m) - 2760 (kg)
	10.2 (m) - 2140 (kg)
Manual lifting capacity at extension	12.5 (m) - 1680 (kg)
	14.9 (m) - 1340 (kg)
Heavy lift capacity at heavy lift outreach	2.2 (m) - 9900 (kg)
Hydraulic boom extension	6.0 (m)
Manual max outreach	17.4 (m)
Lifting height above installation level hydraulic	12.9 (m)
Lifting height above installation level manual	17.5 (m)
Slewing torque	34 (kNm)
V80 Slewing speed	15 (°/s)
Slewing angle	420 (°)
Lifting speed	1.2 m/s

Functional demands

Recommended oil flow low	50 (l/min)
Recommended oil flow high	70 (l/min)
Working pressure	29 (MPa)
Max slope viable at full capacity	5 (°)

Weights and measurements

Height in folded position	2335 (mm)
Width in folded position	2495 (mm)
Installation space needed	1131 (mm)
Weight of crane	2800 (kg)
Weight support leg equipment	402 (kg)

Side View Unfolded Close in Area

