

HAWKES BAY CRANE HIRE 2015 LTD



KATO KR13H 13 TONNE ALL TERRAIN CRANE



GENERAL DIMENSIONS:

Description	Dimensions (mtrs)
Overall height	2.85 metres
Overall width	2.00 metres
Overall length of carrier including boom	7.38 metres
Regd weight TARE	13140 kgs

WORKING RANGE:

Operating Radius (m)	Total Rated Loads – Main Boom Outriggers fully extended					
	5.3m	9.04m	12.78m	16.52m	20.26m	24.0m
1.50	13.00	6.00	6.00			
1.70	13.00	6.00	6.00			
2.00	12.00	6.00	6.00	5.00		
2.50	10.00	6.00	6.00	5.00		
3.00	8.20	6.00	6.00	5.00	4.70	
3.50	7.00	6.00	6.00	5.00	4.70	3.20
4.00	6.10	6.00	6.00	5.00	4.70	3.20
4.50		5.50	5.40	5.00	4.50	3.20
5.00		5.00	4.90	4.60	4.05	3.20
5.50		4.50	4.40	4.20	3.70	3.20
6.00		4.20	4.00	3.80	3.40	3.00
6.50		3.70	3.65	3.50	3.15	2.80
7.00		3.35	3.30	3.20	2.90	2.60
8.00		2.70	2.70	2.70	2.50	2.25
9.00		[7.7m]	2.20	2.30	2.20	1.95
10.00			1.80	1.990	1.95	1.75
11.00			1.45	1.60	1.75	1.55
12.00			1.30	1.40	1.50	1.40
13.00			[11.4m]	1.20	1.30	1.25
14.00				1.00	1.10	1.15
15.00				0.85	0.95	1.00
16.00					0.80	0.90
17.00					0.70	0.80
18.00					0.60	0.68
19.00					0.50	0.58
20.00					[18.8m]	0.48
21.00						0.40
22.00						0.35
25.50						0.32

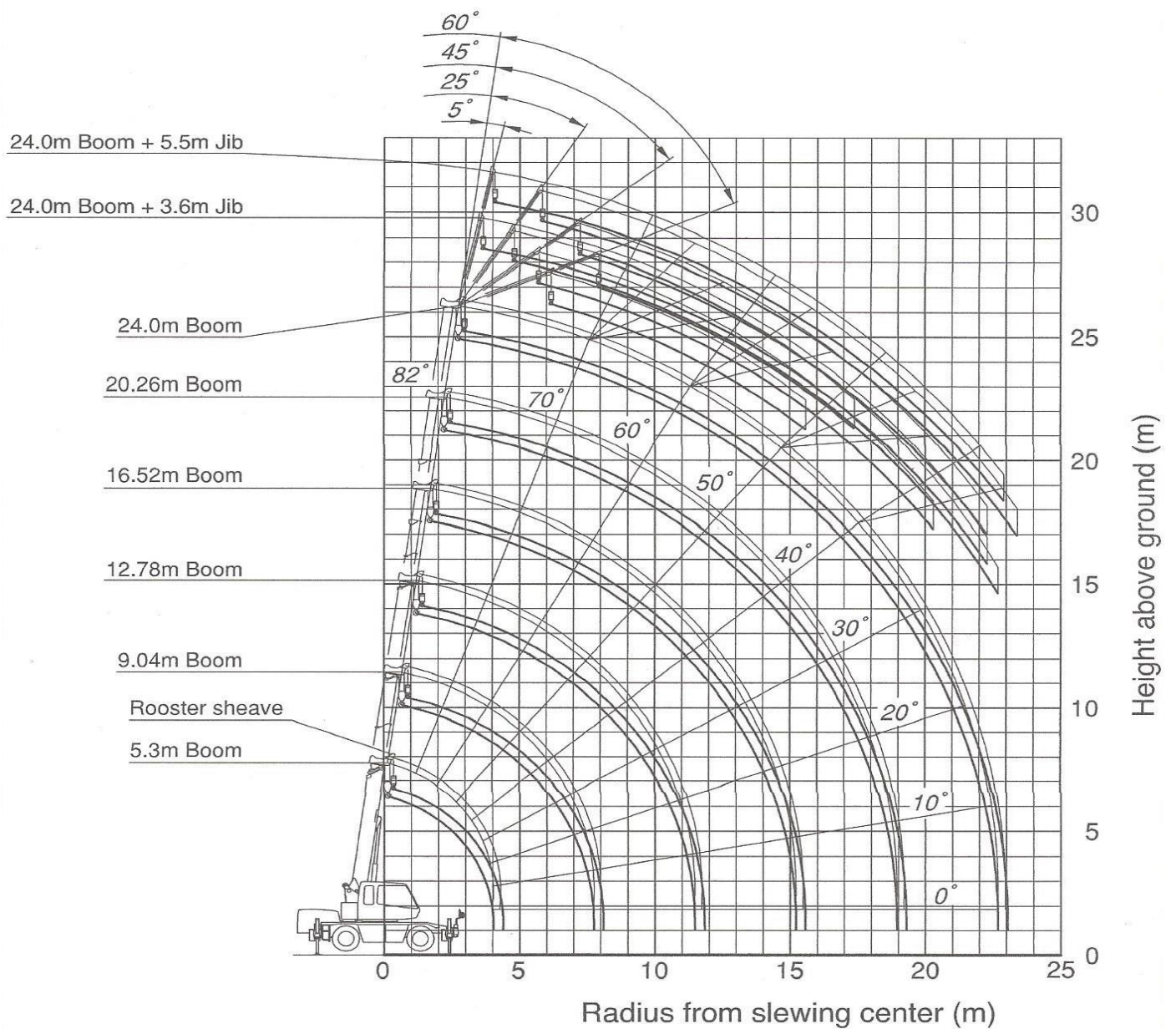
BOOM ANGLE	Total Rated Loads – 24.0m Boom + 4.75m Jib Outriggers fully extended Front jack extended (360°) Front jack not extended (over sides and rear)							
	OFFSET 5°		OFFSET 25°		OFFSET 45°		OFFSET 60°	
	Working radius (m)	Load (t)	Working radius (m)	Load (t)	Working radius (m)	Load (t)	Working radius (m)	Load (t)
82°	4.8	1.00	6.9	1.00	8.2	0.65	8.6	0.40
80°	5.6	1.00	7.6	1.00	8.9	0.65	9.2	0.40
75°	8.4	1.00	10.1	0.85	11.2	0.63	11.5	0.40
70°	11.1	1.00	12.4	0.72	13.4	0.58	13.6	0.40
65°	13.4	0.81	14.7	0.61	15.6	0.52	15.6	0.40
50°	15.6	0.69	16.8	0.55	17.5	0.48	17.4	0.40
55°	17.7	0.58	18.8	0.49	19.3	0.45		
50°	19.6	0.49	20.5	0.44	20.8	0.40		
45°	21.2	0.36	22.0	0.34	22.3	0.35		
40°	22.9	0.23	23.4	0.24				
Critical Boom Angle 39°			39°		44°		59°	

WARNINGS:**When the outriggers are used**

- The lifting capacity chart indicates the maximum load which can be lifted by this crane provided it is level and standing on firm level ground. The values in the chart include the mass of the main hook and slings for boom operation, and auxiliary hook and slings for jib operation [13 ton hook (mass: 90kg), 1.8 ton hook (mass: 25kg)]
- The working radii are the actual values allowing for boom and jib deflection. Therefore you must always operate the crane on the basis of the working radius.
- The jib working radius is based on the jib mounted on the end of the 24.0 m boom. When operating at other boom lengths, use the boom angle alone as the criterion.
- Do not operate the jib when the outriggers are completely retracted.
- If the boom length, boom angle, working radius and/or jib angle exceeds the rated value, use the lifting capacity for the rated value or for the next one, whichever gives the smaller lifting capacity.
- In whatever working conditions the corresponding boom critical angle is shown in the chart. The crane can tip over if the boom is lowered below the critical angle even if unloaded. Therefore never lower the boom below these angles.
- High speed lowering operation should only be performed to allow descent of the hook alone. Avoid sudden lever operation.
- Crane operation is permissible up to a wind speed of 10 m/s. Even in relatively light wind conditions, extra care should be taken when handling loads presenting large wind catching areas.

WARNINGS:**When the outriggers are not used**

- The lifting capacity chart indicates the maximum load the crane can lift when its body is level on firm level ground with all tires inflated to the rated pressure and the suspension cylinder completely retracted. The values in the chart include the mass of the main hook and slings.
- The working radii are the actual values allowing for boom deflection. Therefore you must always operate the crane on the basis of the working radius.
- Do not work with the jib or with a boom length of more than 12.78 m.
- For pick and carry operation, lower the load to just above the ground and keep your speed strictly below 2 km/h to avoid swinging the load. Take particular care to avoid sharp turns, sudden starts and stops.
- If the boom length, boom angle, working radius and/or jib angle exceeds the rated value, use the lifting capacity for the rated value or for the next one, whichever gives the smaller lifting capacity.
- In whatever working conditions the corresponding boom critical angle is shown in the chart. The crane can tip over if the boom is lowered below the critical angle even if unloaded. Therefore never lower the boom below these angles.
- High speed lowering operation should only be performed to allow descent of the hook alone. Avoid sudden lever operation.
- Crane operation is permissible up to a wind speed of 10 m/s. Even in relatively light wind conditions, extra care should be taken when handling loads presenting large wind catching areas.



Note:

1. This diagram does not include deflection of boom and jib.
2. The outriggers are fully extended (360° full range).

www.hawkesbaycranehire.co.nz

p 06 877 7186